

BALDOR® • RELIANCE 

Product Information Packet

JL1309A

1HP,3450RPM,1PH,60HZ,56J,3428L,OPEN,F1,N

Part Detail							
Revision:	L	Status:	PRD/A	Change #:		Proprietary:	No
Type:	AC	Elec. Spec:	34WG3375	CD Diagram:	CD0449	Mfg Plant:	
Mech. Spec:	34F156	Layout:	34LYF156	Poles:	02	Created Date:	02-18-2010
Base:	N	Eff. Date:	08-27-2018	Leads:	4#16 A&J,1#14 #4TH		

Specs			
Catalog Number:	JL1309A	Inverter Code:	Not Inverter
Enclosure:	OPEN	KVA Code:	L
Frame:	56J	Lifting Lugs:	No Lifting Lugs
Frame Material:	Steel	Locked Bearing Indicator:	Locked Bearing
Output @ Frequency:	1.000 HP @ 60 HZ	Motor Lead Quantity/Wire Size:	4 @ 16 AWG, A&J
Synchronous Speed @ Frequency:	3600 RPM @ 60 HZ	Motor Lead Exit:	Terminal Panel Or Lead Hole
Voltage @ Frequency:	230.0 V @ 60 HZ	Motor Lead Termination:	Flying Leads
	115.0 V @ 60 HZ	Motor Type:	3428L
XP Class and Group:	None	Mounting Arrangement:	F1
XP Division:	Not Applicable	Power Factor:	65
Agency Approvals:	CSA	Product Family:	General Purpose
	UR	Pulley End Bearing Type:	Ball
Auxillary Box:	No Auxillary Box	Pulley Face Code:	C-Face
Auxillary Box Lead Termination:	None	Pulley Shaft Indicator:	Ext Thread
Base Indicator:	No Mounting	Rodent Screen:	None
Bearing Grease Type:	Polyrex EM (-20F +300F)	RoHS Status:	ROHS COMPLIANT
Blower:	None	Shaft Extension Location:	Pulley End
Current @ Voltage:	14.000 A @ 115.0 V	Shaft Ground Indicator:	No Shaft Grounding

	7.000 A @ 230.0 V	Shaft Rotation:	Fixed Opposite Standard
	8.800 A @ 208.0 V	Shaft Slinger Indicator:	No Slinger
Design Code:	N	Speed Code:	Single Speed
Drip Cover:	Drip Cover	Motor Standards:	NEMA
Duty Rating:	CONT	Starting Method:	Direct on line
Electrically Isolated Bearing:	Not Electrically Isolated	Thermal Device - Bearing:	None
Feedback Device:	NO FEEDBACK	Thermal Device - Winding:	None
Front Face Code:	Drip Cover Mounting	Vibration Sensor Indicator:	No Vibration Sensor
Front Shaft Indicator:	None	Winding Thermal 1:	Automatic Thermal Overload
Heater Indicator:	No Heater	Winding Thermal 1 Location:	SB
Insulation Class:	B	Winding Thermal 2:	None

Nameplate NP1257L	
CAT.NO.	JL1309A
SPEC.	34F156-3375G3
HP	1
VOLTS	115/230
AMP	14/7
RPM	3450
FRAME	56J
HZ	60
PH	1
SER.F.	1.40
CODE	L
DES	N
CL	B
NEMA-NOM-EFF	65
PF	65
RATING	40C AMB-CONT
CC	USABLE AT 208V 8.8
DE	6203
ODE	6203
ENCL	OPEN
SN	
	SFA 16/8

Parts List		
Part Number	Description	Quantity
SA191142	SA 34F156-3375G3	1.000 EA
RA178804	RA 34F156-3375G3	1.000 EA
EC1645A06SP	ELEC CAP, 645-774 MFD, 125V, 2.06D X 4.	1.000 EA
34EP3202A02	FR ENDPLATE, MACH	1.000 EA
51XW0832A07	8-32 X .44, TAPTITE II, HEX WSHR SLTD SE	3.000 EA
RM1010A12	.437 I.D. 1" VINYL CAP (SHORT) MOCAP	1.000 EA
11XW0832G06	#8-32 X 3/8, TAPTITE II, HEX WSHR SLTD	1.000 EA
51XB1016A05	10-16X5/16HX WA SL SR TYB (F/S)	2.000 EA
HW5100A03	WAVY WASHER (W1543-017)	1.000 EA
WD4100A01	DP-875 HEYCO PLUG OR 62MP0875 MICRO PLAS	1.000 EA
34EP3401A01SP	PU ENDPLATE, MACH	1.000 EA
34AD2000	BAFFLE PLATE, STAMPED	1.000 EA
60XW0632A06	6-32 X 3/8 TORX HEAD SCREW TAPTITE II	4.000 EA
51XN1032A20	10-32 X 1 1/4 HX WS SL SR	2.000 EA
51XW0832A07	8-32 X .44, TAPTITE II, HEX WSHR SLTD SE	3.000 EA
34CB4501SP	TERMINAL BOX LID, STAMPED X (PLATED)	1.000 EA
51XW0832A07	8-32 X .44, TAPTITE II, HEX WSHR SLTD SE	2.000 EA
34FH4500A02P	DRIPCOVER, MODEL 34	1.000 EA
MG1000G27	MED CHARCOAL METALLIC GREY 400-0096	0.014 GA
85XU0407S04	4X1/4 U DRIVE PIN STAINLESS	2.000 EA
LB1009N	LABEL,ROTATION DIRECTION (ON ROLLS)	1.000 EA
33CB4800A02	CAPACITOR COVER, STAMPED	1.000 EA
SP5075A02	34 TERM PANEL SWITCH W/ ML14-EB18	1.000 EA
HA3100A21	THRUBOLT 10-32 X 9.937	4.000 EA

Parts List (continued)		
Part Number	Description	Quantity
LB1118	LABEL,WARNING (ROLL LABEL)	1.000 EA
LC0031	CONNECTION LABEL	1.000 EA
NP1257L	ALUM UL CSA CC THERMAL REV MTG	1.000 EA
27PA1001	PKG GRP, PRINT PK1027A06	1.000 EA
MN416A01	TAG-INSTAL-MAINT no wire (1200/bx) 3/19	1.000 EA
PK3083	STYROFOAM PACKING CRADLE	1.000 EA
PK3088	MICROFOAM, 8"X"8 PERF. SHEETS 5,400/RL	1.000 EA

AC Induction Motor Performance Data

Record # 6683 - Typical performance - not guaranteed values

Winding: 34WG3375-R001	Type: 3428L	Enclosure: OPEN
-------------------------------	--------------------	------------------------

Nameplate Data				230 V, 60 Hz: High Voltage Connection	
Rated Output (HP)	1			Full Load Torque	1.5 LB-FT
Volts	115/230			Start Configuration	direct on line
Full Load Amps	14/7			Breakdown Torque	5.3 LB-FT
R.P.M.	3450			Pull-up Torque	3.8 LB-FT
Hz	60	Phase	1	Locked-rotor Torque	4.4 LB-FT
NEMA Design Code	N	KVA Code	L	Starting Current	46 A
Service Factor (S.F.)	1.4			No-load Current	5.6 A
NEMA Nom. Eff.	65	Power Factor	65	Line-line Res. @ 25°C	1.63 Ω A Ph 1.64 Ω B Ph
Rating - Duty	40C AMB-CONT			Temp. Rise @ Rated Load	37°C
S.F. Amps	16/8			Temp. Rise @ S.F. Load	47°C

Load Characteristics 230 V, 60 Hz, 1 HP

% of Rated Load	25	50	75	100	125	150	S.F.
Power Factor	31	45	58	68	75	83	79
Efficiency	47.1	60.7	66.5	69.1	70.2	69.4	70.9
Speed	3578	3563	3546	3529	3511	3491	3500
Line amperes	5.7	6	6.4	7	7.7	8.4	8.1

Performance Graph at 230V, 60Hz, 1.0HP Typical performance - Not guaranteed values

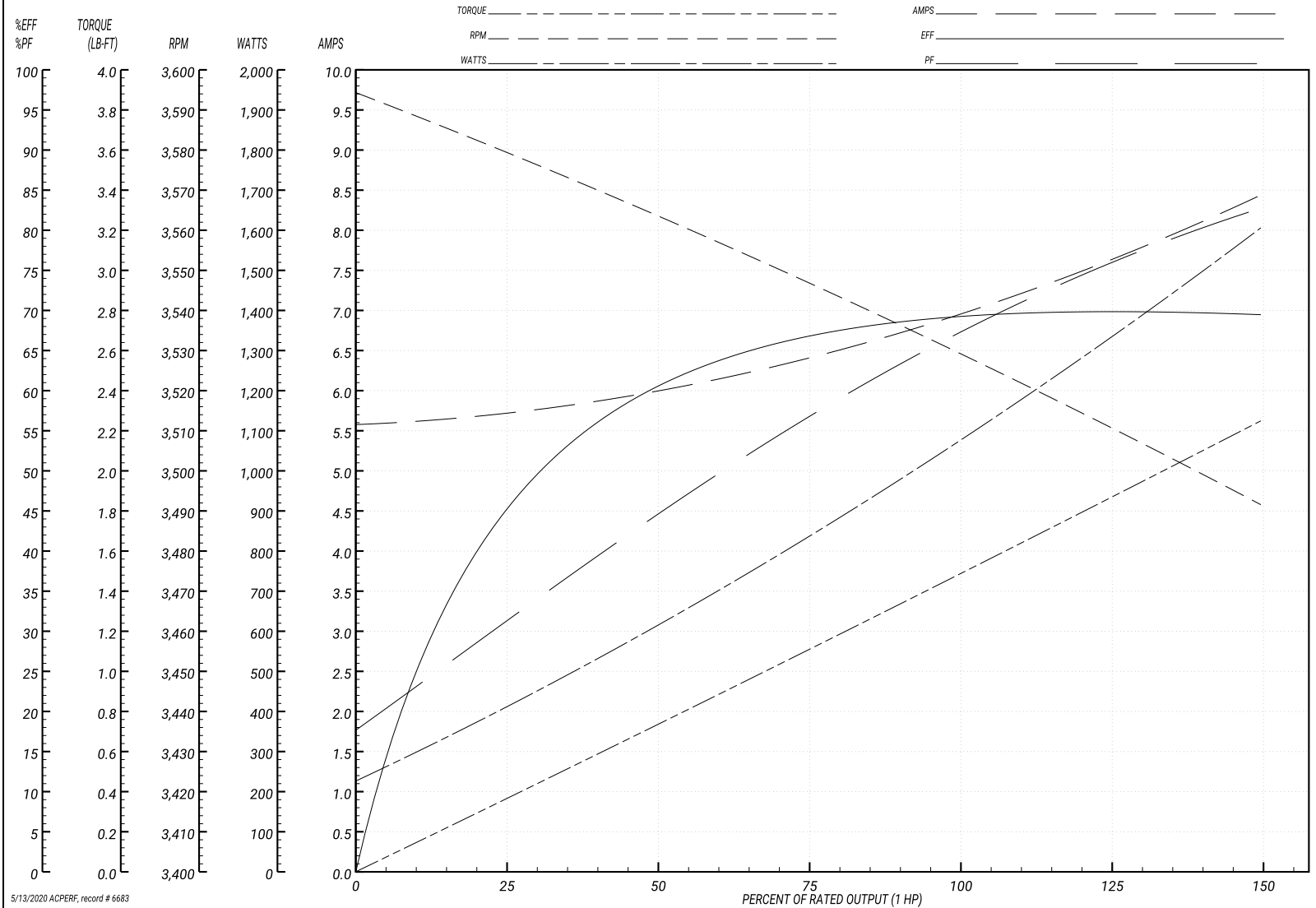
ABB Motors and Mechanical Inc.

WINDING # 34WG3375

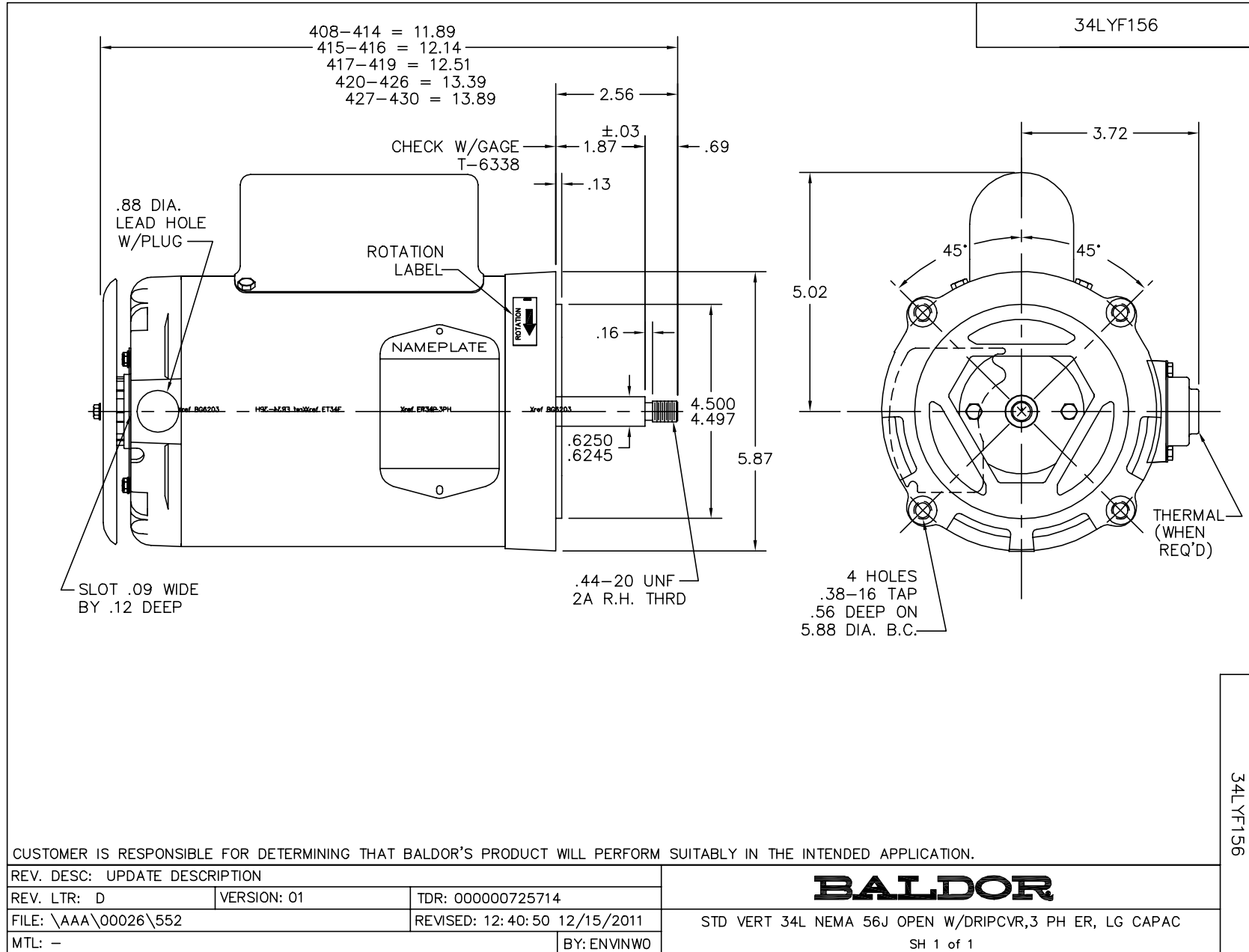
Typical performance - not guaranteed values.

1 HP 1 PH 60 HZ 3450 RPM 230 V 3428L

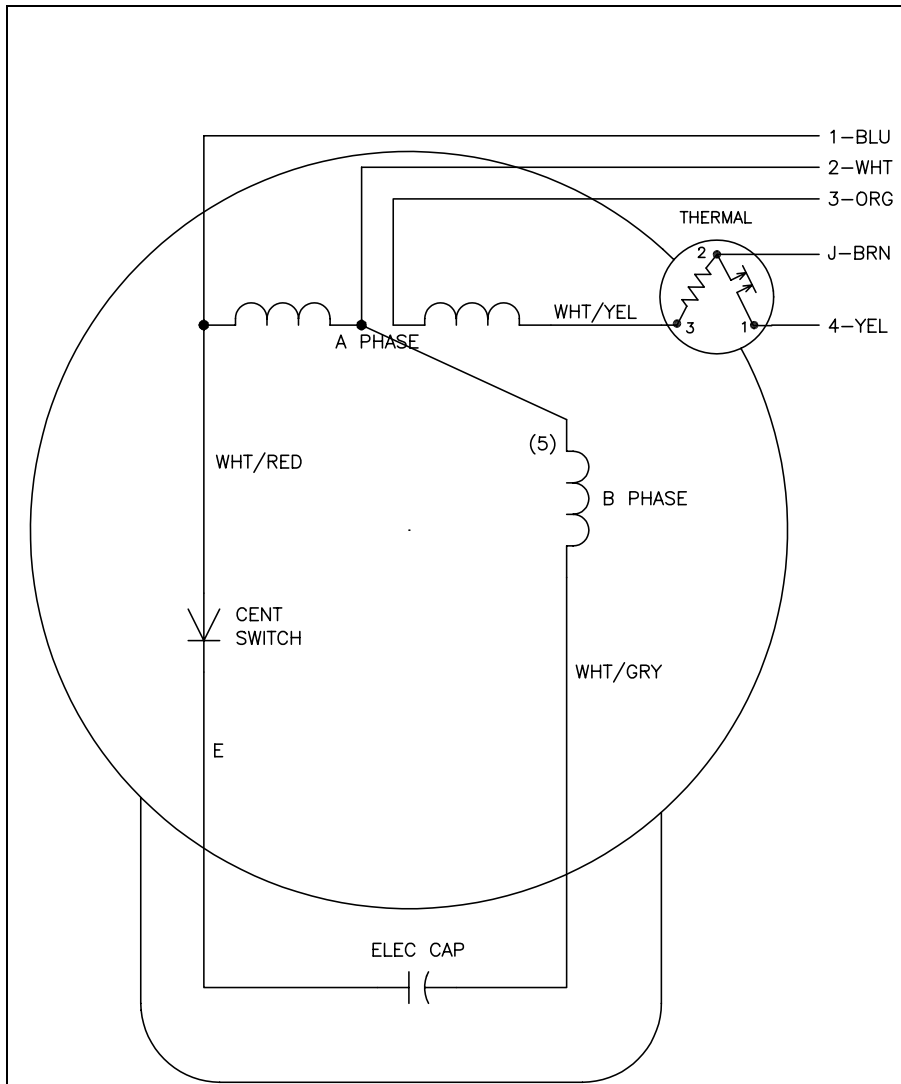
TORQUES(LB-FT): PO=5.3 PU=3.8 LR=4.4 LRA=46



5/13/2020 ACPERF, record # 6683



CD0449



	LINE A	LINE B	JOIN	JOIN
HIGH	1	4	2,3	J
LOW	1,3	4	-	2,J

NOTES:

1. CONNECTIONS ARE SHOWN FOR CCW ROTATION FACING END OPPOSITE SHAFT EXTENSION (STD). FOR CW ROTATION, INTERCHANGE 5 AND 8 INTERNALLY.
2. MULTIPLE CAPACITORS ARE CONNECTED IN PARALLEL UNLESS OTHERWISE SPECIFIED.
3. LEAD COLORS ARE OPTIONAL. LEADS MUST ALWAYS BE NUMBERED AS SHOWN.

REV. DESC: -		TDR: 0178636	
REV. LTR: D	BY: JLP	REVISED: -	MDL: -
67400		FILE: -	MTL: -

BALDOR ELECTRIC Co.

TYPE L, DV, FIX, THERM, B PH AMPS THRU HTR HVC, 5 LEAD

CD0449